

PRODUCT CATALOGUE



Leo J. Wahl

MAKE IT
together
Make it with Wahl.

// WORLD LEADER

Since 1919, with the invention of the world’s first electromagnetic hair clipper “Model 66” by Leo J. Wahl, our experts have engineered a powerful line of clippers and trimmers masterfully crafted to bring modern technology right to your salon. At WAHL, we believe that every stylist deserves a tool that is as reliable as it is inspiring. Tested for quality and precision, we promise you unparalleled results.

Today, President Brian Wahl, great-grandson of Leo Wahl, continues to lead the proud tradition of WAHL Clipper Corporation. The group now boasts some 3,300 employees. Production is based in the USA, Europe and Asia.

WAHL continues to demonstrate its innovative strength at international trade fairs, organizing exclusive stage shows and excellent specialist seminars.

WAHL Clipper Corporation comprises 22 companies operating in 180 countries around the globe making it world’s leading manufacturer of professional hair clippers.

// CONTENT

5 STAR SERIES PROFESSIONAL BARBER TOOLS	4
PROFESSIONAL CLIPPERS AND TRIMMERS	10
HAIR DRYERS AND STYLINGTOOLS	16
CHARGE STANDS	22
BLADES AND ACCESSORIES	24
TECHNICAL SPECIFICATIONS.....	34

// PROFESSIONAL BARBER TOOLS

The WAHL 5 Star Series clippers have surgically close, bald fade blades that highlight the precision of these tools. All trimmers with the 5 Star sub brand have adjustable blades that can be aligned to zero-overlap for precision trimming.



// VAPOR™

Go from bald to fade with an innovative adjustable balding blade



Model: 3026483



F32 FADEOUT™ BLADE:
50 % more teeth and 6 grams lighter. adjusts to 0 - Overlap



Convenient thumb lever:
easy cutting length adjustment 0.5 - 1.2 mm



7 premium attachment combs:
1.5 mm | 3 mm | 4.5 mm | 6 mm | 10 mm | 13 mm | 16 mm



Li-Ion battery:
run time: 150 Min.
charging time: 60 Min.



Cord / cordless



Future compatible:
• 3023997 Power Station™ (Inlay from mid 2025) (not included)

// BLACK CORDLESS MAGIC CLIP®

Professional cord / cordless clipper for seamless blending and fading

GOLD STAGGERTOOTH BLADE:
With „Crunch“ Blade-Technology

Convenient thumb lever:
easy cutting length adjustment 0.5 - 1.2 mm

8 premium attachment combs:
1.5 mm | 3 mm | 4.5 mm | 6 mm | 10 mm | 13 mm | 19 mm | 25 mm

Li-Ion battery:
run time: 100 Min.
charging time: 60 Min.

Cord / cordless

Compatible:
• 3023997 Power Station™
• 03801-116 Charge Stand (not included)



Model: 3026434

// CORDLESS BARBER COMBO™

Consisting of Black Cordless Magic Clip®, which creates smooth transitions. Ideal for large-area hair removal. And Black Cordless Detailer® Li for extremely close contours, details and precise, clear lines.

GOLD STAGGERTOOTH BLADE:
With „Crunch“ Blade-Technology

Convenient thumb lever:
easy cutting length adjustment 0.5 - 1.2 mm

3 premium attachment combs:
1.5 mm | 3 mm | 4.5 mm |

Li-Ion battery:
run time: 100 Min.
charging time: 60 Min.

Cord / cordless

Compatible:
• 3023997 Power Station™
• 03801-116 Charge Stand (not included)



Titanium- & DLC-Coating



Titanium- & DLC-Coating



GOLD T-WIDE DETAILER BLADE 0.4 mm:
Extra wide (40.6 mm), adjusts to 0 - Overlap



3 attachment combs:
1.5 mm | 3 mm | 4.5 mm



Li-Ion battery:
run time: 100 Min.
charging time: 60 Min.



Cord / cordless



Compatible:
• DETAILER LI® charge stand
• 3023997 Power Station™ (not included)

Model: 3025726



// CORDLESS MAGIC CLIP®

Professional cord / cordless clipper for smooth blending

STAGGERTOOTH BLADE:
With "Crunch"
Blade-Technology



Convenient thumb lever:
easy cutting length ad-
justment 0.5 – 1.2 mm



8 premium attachment combs:
1.5 mm | 3 mm | 4.5 mm |
6 mm | 10 mm | 13 mm |
19 mm | 25 mm



Li-Ion Battery:
run time: 100 Min.
charging time: 60 Min.



Cord / cordless



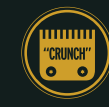
Compatible:
• 3023997 Power Station™
• 03801-116 Charge Stand
(not included)



Model: 3027252

// CORDLESS SENIOR™

Most powerful professional cord /
cordless clipper for precision fading



SURGICAL BLADE:
High precision blade
adjusts to 0-Overlap



Convenient thumb lever:
easy cutting length ad-
justment 0.5 – 1.2 mm



3 premium attachment combs:
1.5 mm | 3 mm | 4.5 mm



Li-Ion battery:
run time: 80 Min.
charging time: 60 Min.



Cord / cordless



Compatible:
• 3023997 Power Station™
• 03801-116 Charge Stand
(not included)



Model: 3027249

// CORDLESS SENIOR™ METAL EDITION as long as stocks last

This limited clipper boasts a sturdy metal housing



SURGICAL BLADE:
High precision blade
adjusts to 0-Overlap



Convenient thumb lever:
easy cutting length ad-
justment 0.5 – 1.2 mm



3 premium attachment combs:
1.5 mm | 3 mm | 4.5 mm



Li-Ion battery:
run time: 80 Min.
charging time: 60 Min.



Cord / cordless

Included:
• 03801-116 Charge Stand
Compatible:
• 3023997 Power Station™
(not included)



Model: 3000116

// CORDLESS LEGEND™

Professional cord/cordless clipper
for long-range fading



Model: 08594-016



WEDGE BLADE:
With „Crunch“
Blade-Technology



Convenient thumb lever:
easy cutting length
adjustment 0.7 – 1.7 mm



8 premium attachment combs:
1.5 mm | 3 mm | 4.5 mm |
6 mm | 10 mm | 13 mm |
19 mm | 25 mm



Li-Ion battery:
run time: 100 Min.
charging time: 60 Min.



Cord / cordless



Compatible:
• 3023997 Power Station™
• 03801-116 Charge Stand
(not included)

// LEGEND™

Professional corded clipper
for long-range fading



WEDGE BLADE:
With „Crunch“
Blade-Technology



Convenient thumb lever:
easy cutting length
adjustment 0.7 – 1.7 mm



8 premium attachment combs:
1.5 mm | 3 mm | 4.5 mm |
6 mm | 10 mm | 13 mm |
19 mm | 25 mm



V9000:
professional vibrator mo-
tor for ultimate durability,
power and longevity



Cord



Model: 3026828



Model: 3026830

// MAGIC CLIP®

Professional corded clipper
for close cutting and fading



SURGICAL BLADE:
High precision blade
adjusts to 0-Overlap



Convenient thumb lever:
easy cutting length ad-
justment 0.5 – 1.2 mm



8 attachment combs:
1.5 mm | 3 mm | 4.5 mm |
6 mm | 10 mm | 13 mm |
19 mm | 25 mm



V5000:
professional vibrator
motor for durability and
longevity



Cord

Compatible:
• 3023997 Power Station™
• 03801-116 Charge Stand
(not included)

// BALDING™

Professional corded clipper
for skin and bald fading



BALDING BLADE:
High precision blade
adjusts to 0-Overlap



V5000:
professional vibrator
motor for durability and
longevity



2 attachment combs:
1.5 mm | 4.5 mm



Cord



Model: 3026826

// VANISH™

Ultimate Finishing-Tool



MICRO-THIN GOLD FOILS (0.05 mm):
Remove any stubble for an ultra smooth finish. (48 mm wide)



INDEPENDENT SUSPENSIONCUTTER BARS:
Fit neck & face contour



Li-Ion Battery:
run time: 100 Min.
charging time: 50 Min.



Cord / cordless



LED charging indicator:
100 % | 60 % | 30 %



Compatible:
• 3023997 Power Station™
(not included)



Independent suspensioncutter bars

Model: 08173-716

// A·LIGN™

Perfectly balanced! For barbers and stylists in the pursuit of control and perfection



A·ALIGN BLADE 0.4 mm:
wide (32 mm),
adjusts to 0 – Overlap



3 attachment combs:
1.5 mm | 3 mm | 4.5 mm



Li-Ion battery:
run time: 180 Min.
charging time: 60 Min.



Cord / cordless



Compatible:
• 3023997 Power Station™
(not included)



Model: 08172-016

// CORDLESS DETAILER® LI

Professional cord / cordless trimmer for sharp outlines



T-WIDE DETAILER BLADE 0,4 mm:
Extra wide (40.6 mm),
adjusts to 0 – Overlap



3 attachment combs:
1.5 mm | 3 mm | 4.5 mm



Li-Ion battery:
run time: 100 Min.
charging time: 60 Min.



Cord / cordless



Included:
• DETAILER LI® charge stand
Compatible:
• 3023997 Power Station™
(not included)

Model: 08171-016

// DETAILER®

Professional corded rotary trimmer for sharp outlines



T-WIDE DETAILER BLADE 0,4 mm:
Extra wide (40.6 mm),
adjusts to 0 – Overlap



3 attachment combs:
1.5 mm | 3 mm | 4.5 mm



Cord



Model: 08081-1216

// HI-VIZ™

All in the details! Narrow in on fine lines with more visibility from a slim neck and an improved wide T-Blade.



T-WIDE HI-VIZ BLADE 0.4 mm:
Extra wide (40.6 mm),
adjusts to 0 – Overlap



Li-Ion battery:
run time: 135 Min.
charging time: 45 Min.



Cord / cordless



Included:
• HI-VIZ™ charge stand
Compatible:
• 3023997 Power Station™
(not included)



Metal housing



DLC-Coating

Model: 3023702

// CLIPPERS AND TRIMMERS

Our classic hair clippers and trimmers reflect our passion for robust and reliable hair dressing tools for more than 100 years.



// CORDLESS SUPER TAPER™

Professional cord / cordless clipper for bulk removal and tapering



Model: 3027253



CHROME BLADE:
Chrome-plated precision blade set



Convenient thumb lever:
easy cutting length adjustment 1 – 2 mm



4 attachment combs:
3 mm | 6 mm | 10 mm | 13 mm



Li-Ion battery:
run time: 100 Min.
charging time: 60 Min.



Cord / cordless



Compatible:
• 3023997 Power Station™
• 03801-116 Charge Stand (not included)

// SUPER TAPER™

Professional corded clipper for bulk removal and tapering



CHROME BLADE:
Chrome-plated precision blade set



Convenient thumb lever:
easy cutting length adjustment 1 – 2 mm



4 attachment combs:
3 mm | 6 mm | 10 mm | 13 mm



V5000:
professional vibrator motor for durability and longevity



Cord



Model: 3026832

// CHROME SUPER TAPER™

as long as stock lasts

Professional corded clipper for bulk removal and tapering



Model: 08463-316H



CHROME BLADE:
Chrome-plated precision blade set



Convenient thumb lever:
easy cutting length adjustment 1 – 2 mm



4 attachment combs:
3 mm | 6 mm | 10 mm | 13 mm



V5000:
professional vibrator motor for durability and longevity



Cord



Chrome finish:
Stylish and durable design

// TAPER 2000™

as long as stock lasts

Professional corded clipper for bulk removal and tapering



Model: 08464-1316H



CHROME BLADE:
Chrome-plated precision blade set



Convenient thumb lever:
easy cutting length adjustment 1 – 2 mm



4 attachment combs:
3 mm | 6 mm | 10 mm | 13 mm



V5000:
professional vibrator motor for durability and longevity



Cord



// KUNO

Lightweight, compact, and built to last. The KUNO is designed to provide perfect control on every cut.

Quick Detach DIAMOND TAPER-LEVER BLADE:
Quick detach blade for easy cleaning



3 Click / dynamic lever for versatility and control:
easy cutting length adjustment 0.8 – 1.8 mm



6 Premium Magnetic Cutting Guides:
1.5 mm | 3 mm | 4.5 mm | 6 mm | 10 mm | 13 mm



Li-Ion battery:
run time: 100 Min.
charging time: 60 Min.



Cordless



Included:
Innovative premium charge stand



Model: 1887-0470



Cordless work without interruption. GENIO is lightweight, powerful, and designed to cut through all hair types.

// GENIO

Quick Detach DIAMOND TAPER-LEVER BLADE:
Quick detach blade for easy cleaning



3 Click / dynamic lever for versatility and control:
easy cutting length adjustment 0.8 – 1.8 mm



4 Slide-On Cutting Guides:
3 mm | 6 mm | 9 mm | 12 mm



2 Interchangeable Li-Ion batteries:
run time: 120 Min.
charging time: 75 Min.



Cordless



Included:
Innovative premium charge stand



Model: 1876-0488



// CHROMSTYLE

as long as stock lasts

Equipped with a precision blade and a powerful motor.

Quick Detach FINE BLADE:
Quick detach blade for easy cleaning



5-Click Integrated Taper Lever:
easy cutting length adjustment 0.7 – 3 mm



4 Slide-On Cutting Guides:
3 mm | 6 mm | 9 mm | 12 mm



Li-Ion battery:
run time: 90 Min.
charging time: 60 Min.



Cordless



Included:
Innovative premium charge stand



Model: 1871-0473



// CHROMINI

as long as stock lasts

The CHROMINI features a high-performance motor and a precision blade for faster cutting with precise results.



Quick Detach U-BLADE 0.3 mm:
Quick detach blade for easy cleaning



4 Premium Cutting Guides:
1.5 mm | 3 mm | 4.5 mm | 6 mm



Battery:
run time: 85 Min.
charging time: 120 Min.



Cordless



Included:
Innovative premium charge stand

Model: 1591-0466

// T-CUT

as long as stock lasts

The T-CUT features a wide precision blade and powerful motor to deliver precise edging and lining with every cut.

Quick Detach T-BLADE 0.3 mm:
Quickly removable blade for easy cleaning



Battery:
run time: 75 Min.
charging time: 120 Min.



Cordless



Included:
Innovative premium charge stand



Model: 1591-0465



 **MADE IN GERMANY**

All Blades shown on this page are manufactured in Germany.

// STEALTH BERET™

Professional cord/cordless trimmer for close lining and edging



BLACK CHROME BERET BLADE 0.4 mm:
For precise contours close to the skin (32.5 mm)



4 attachment combs:
3 mm | 6 mm | 10 mm | 13 mm



Li-Ion battery:
run time: 75 Min.
charging time: 60 Min.



Cord / cordless



Included:
• BERET™ charge stand

Model: 08841-1516

// BERET™

Professional cord/cordless trimmer for close lining and edging



BERET BLADE 0.4 mm:
For precise contours close to the skin (32.5 mm)



4 attachment combs:
3 mm | 6 mm | 10 mm | 13 mm



Li-Ion battery:
run time: 75 Min.
charging time: 60 Min.



Cord / cordless



Included:
• BERET™ charge stand

Model: 08841-616

// MICRO GROOMSMAN

Nose and ear trimmer



Optimum:

Precision trimmer with professional, rotating stainless steel cutting system grasps hair when moving sides and from above. Faster, simpler and safer than scissors.

Hygienic:

Cutting head can be removed for simple cleaning under water.

Model: 3214-0471

// PEANUT® LI

available from May 2025

The Peanut® Li is now upgraded with a modern shape, new charging capabilities and a more powerful motor.



PEANUT LI BLADE 0.4 mm:
Quick-Detach-Blade for easy cleaning, (32.5 mm)



3 attachment combs:
3 mm | 6 mm | 10 mm | 13 mm



Li-Ion battery:
run time: 110 Min.
charging time: 20 Min.



Cordless (USB-C)



Compatible:
• 3023997 Power Station™ (not included)

Model: 3026718

// MOBILE SHAVER

Finishing Tool



SHAVING FOIL (0.2 mm):
Round ground and polished cutter (40 mm)



NiMH battery:
run time: 45 Min.
charging time: 480 Min.



Cordless



Soft-touch:
Stylish matte black design with soft touch

Model: 3615-0471

// SUPER CLOSE

Finishing Tool



ULTRA-CLOSE FOIL (0.05 mm):
Round ground and polished cutter (45 mm)



Li-Ion battery:
run time: 150 Min.
charging time: 90 Min.



Cord / cordless



Soft-touch:
Stylish matte black design with soft touch

Model: 3616-0470

// HAIRDRYER & STYLINGTOOLS

Because a good hair cut isn't completed after cutting the hair!



// VANQUISH™

Premium digital motor hair dryer

Professional:

1,600 Watt. High-speed digital motor delivers exceptional air speed for quick drying results.

Performance:

Auto-clean function and ionic technology. Memory Function stores heat & speed settings. LED screen displays four heat & three speed settings.

Cool:

3 speeds, 4 heat levels and immediate cold shot for holding styles in place.

SmoothTone™ motor system:

101,000 RPM high-speed digital motor removes uncomfortable sound frequencies.

Ergonomic:

Super-light design improves handling

Accessories:

Includes 3 Premium Magnetic Attachments

Weight: Only 340 g

Black
Model: 4321-0470

Rose Gold
Model: 4321-0471



Auto clean function

1. Switch off the hairdryer
2. Remove the filter cover
3. Press the cold shot button for 5 sec.

After 10 sec. auto clean function switches off automatically

Do this minimum once a week.

// BARBER DRYER

as long as stock lasts
Professional hair dryer

Professional:

Extremely powerful 2,200 Watt. Long-life AC motor.

Performance:

Ionic technology with tourmaline grill for faster drying.

Cool:

2 speeds, 3 heat levels and immediate cold shot for holding styles in place.

Durable:

Retro chrome finish for a stylish professional look.

Ergonomic:

2 click nozzles for easy movement during styling. Ergonomic handling. Stay safely in place.

Model: 4317-0470



// TURBO BOOSTER 3400 ERGOLIGHT™

Professional hair dryer

Professional:

Extremely powerful 2,400 Watt. Long-life AC motor.

Power:

Ultra strong fan for maximum airflow.

Tourmaline:

Tourmaline technology minimizes drying time, reduces static and maintains healthy looking hair.

Compact:

Extra compact, lightweight and quiet.

Cool:

2 speeds, 3 heat levels and immediate cold shot.

Made in Italy
Model: 4314-0475



// SUPER DRY™

Professional hair dryer

- Professional:**
Super strong 2,000 Watt power. Long-life AC motor.
- Tourmaline:**
Modern tourmaline technology generates negative ions and gentle infrared warmth.
- Cool:**
2 speeds, 3 heat levels and immediate cold shot.



Model: 4340-0470

// PROTECT

Professional hair dryer

- Professional:**
Powerful professional hair dryer up to 1,500 Watt with excellent drying performance.
- Performance:**
Long-life and reliable AC-Motor with safety thermostat and removable filter.
- Cool:**
speed- and 3 heat levels. Separate cold shot button.
- Ergonomic:**
Ergonomically balanced weight distribution. Handle with slip resistant surface for smooth operation.



Model: 4360-0470

// VENTUS PRO

Professional hair dryer

- Professional:**
2,200 Watt, durable AC-collector motor.
- Performance:**
Ionic technology with tourmaline grill for faster drying.
- Cool:**
2 speeds, 3 heat levels and immediate cold shot for holding styles in place.
- Ergonomic:**
2 click nozzles for easy movement during styling. Ergonomic handling. Stay safely in place.



Made in Italy

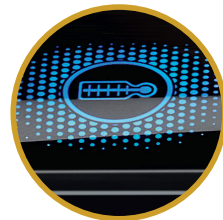
Model: 4352-0470





// CERALINE

Premium Ceramic & Tourmaline
Hair Straightener



Rounded, extra long floating styling plates (100 mm length) enable creative hair styling and efficient performance.

Ceramic-Tourmaline Technology for gently straightening, reduced static and silky shiny hair.

Ready for use in only 25 seconds due to extra short heat-up time.

Easy temperature control for optimal styling (150°C – 230°C) in five stages through semi digital display.

Model: 4466-0470

// CUTEK

Professional Ceramic
Hair Straightener



Rounded-off, suspended heating plates for beautiful curls, smooth waves and perfectly straight hair.

Gentle straightening thanks to ceramic technology for healthy, shiny hair.

Automatic safety shutdown after 50 minutes.

Quickly heats up to the selected temperature (150°C – 230 °C). With LED temperature indicator.

Model: 4417-0472

// CURL PRO

Gentle Titanium Coating
for Natural Curls



Decreasing diameter from 25 to 13 mm for extremely natural appearing curls. Insulated tip.

Professional high-tech titanium technology for perfect results.

Automatic safety cut-off after 60 minutes.

Easy adjustment to the ideal styling temperature (80°C -210°C) through LCD display.

Model: 4437-0471

// AIRSTYLER PRO

Professional Premium
Airstyler-Set



Brush body made of aluminium. Insulated safety tip.

2 speed and heat levels. Cooling level to set styling.

Powerful motor with overheat protection. 1,100 Watt power for drying and forming.

3 interchangeable thermal circular brushes: Ø 25 mm thermal brush for small curls, Ø 30 mm and Ø 38 mm thermal brush for waves and volume.

Model: 4550-0471

// CHARGE STANDS

Charge your most valued tools faster, easier, and smarter.



// POWER STATION™

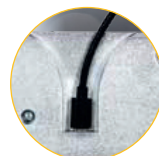
Designed to charge 3 Wahl Professional 5V tools at once.



6 removable inserts:
Clipper, Trimmer, Shaver



corded



**sleek space-saving
power cord and
design**



**USB-C
charging port**

Model: 3023997

// CHARGE STAND CORDLESS CLIPPERS

Premium charge stand

Professional:

Space saving charge stand with cable rotation function

Compatible:

The charge stand can be used with both 4 volt and 5 volt charging cables thanks to the included adapter

Fits:

CORDLESS SENIOR | CORDLESS MAGIC CLIP |
CORDLESS LEGEND | CORDLESS SUPER TAPER



Model: 03801-116

// BLADES AND ACCESSORIES

Our product range doesn't end with clippers and trimmers – find out about our spare parts and additional accessories.

// F32 FADEOUT™ BLADE

CLIPPER BLADE



50% more teeth and 6 grams lighter than our standard cutting blades for faster, smoother cuts. Cutting length: 0.5 – 1,2 mm.

Model: 3026842

// HI-VIZ™ BLADE

TRIMMER BLADE



Extra wide T-BLADE. DLC coating for extended life. Extended blade cutting area produces faster cutting results. Adjusts to 0-Overlap. Cutting length: 0.4 mm.

Model: 3024059

// A-LIGN™ BLADE

TRIMMER BLADE



High visible precision BLADE. Adjusts to 0-Overlap. Cutting length: 0.4 mm.

Model: 02176-116

// SURGICAL BLADE

CLIPPER BLADE



Slightly shorter teeth for finer hair feed – for a precise result. Ideal for on-scalp cutting and seamless fades. Adjusts to 0-Overlap. Cutting length: 0.5 – 1.2 mm.

Model: 02191-116

// GOLD STAGGERTOOTH BLADE

CLIPPER BLADE



Titanium and DLC coating for extended life. Bottom blade = Surgical blade (optimum fading angle). Top blade alternating small and tall teeth – for perfect blending of fades. Cutting length: 0.5 – 1.2 mm.

Model: 02161-716

// GOLD DETAILER T-WIDE BLADE

TRIMMER BLADE



Titanium and DLC coating for extended life. Extra wide T-BLADE. Extended blade cutting area produces faster cutting results. Adjusts to 0-Overlap. Cutting length: 0.4 mm.

Model: 02215-716

// DETAILER T-WIDE BLADE

TRIMMER BLADE



Extra wide T-BLADE. Extended blade cutting area produces faster cutting results. Adjusts to 0-Overlap. Cutting length: 0.4 mm

Model: 02215-1116

// STANDARD BLADE

CLIPPER BLADE



Standard blade for mass removal and all clipper work. Cutting length: 1 – 2 mm.

Model: 01006-416

// BALDING BLADE

CLIPPER BLADE



Trimmer-like teeth and cutting length – short and sharp results. Ideal for bald and skin fades. Adjusts to 0-Overlap. Cutting length: 0.5 mm.

Model: 02105-416

// BLACK CHROME BERET BLADE

TRIMMER BLADE



Black chrome-plated precision blade set with quick-change system. For contours close to the skin and all fine work. Cutting length: 0.4 mm.

Model: 02111-416

// BERET BLADE

TRIMMER BLADE



Chrome-plated precision blade set with quick-change system. For contours close to the skin and all fine work. Cutting length: 0.4 mm.

Model: 02111-216

// WEDGE BLADE

CLIPPER BLADE



Deeper teeth for enhanced feed for fast and precise cutting. Wider fade range. Cutting length: 0.7 – 1.7 mm.

Model: 02228-416

// STAGGERTOOTH BLADE

CLIPPER BLADE



Bottom blade = Surgical blade (optimum fading angle). Top blade alternating small and tall teeth – for perfect blending of fades. Cutting length: 0.5 – 1.2 mm.

Model: 02161-416

// PEANUT® LI BLADE

TRIMMER BLADE



Blade geometry provides high cutting performance through all hair types. Cutting length: 0.4 mm.

Model: 3026859

// DIAMOND TAPER LEVER BLADE

CLIPPER BLADE



Innovative carbon coating with diamond-like properties for increased service life, high level of hardness and wear-resistant surface of the top blade.
Cutting length: 0.8-1.8 mm.

Model: 1887-7170

// DIAMOND BLADE

CLIPPER BLADE



Innovative carbon coating with diamond-like properties for increased service life, high level of hardness and wear-resistant surface of the top blade.
Cutting length: 0.7 - 3 mm.

Model: 1854-7024

// TEXTURIZING BLADE

CLIPPER BLADE



For creative texturizing & slicing techniques.
3 levels of intensity (MIN | MID | MAX).

Model: 1854-7041

// FADING BLADE

CLIPPER BLADE



Shorter cutting length due to a flat cutting angle. Adjustable. Cutting length can be read off quickly and easily thanks to the new labelling concept.
Cutting length: 0.5 – 2 mm.

Model: 1887-7030

// BLENDING BLADE

CLIPPER BLADE



Precision blade ideal for short hair, smooth transitions and blending of longer hair with clipper over comb technique. Flat angle perfect for skin close results. New offset teeth geometry for easier and faster natural transitions.
Cutting length: 0.5 - 2 mm.

Model: 1887-7120

// FINE BLADE

CLIPPER BLADE



High-quality professional stainless steel blade set featuring integrated cutting-length adjustment.
Cutting length: 0.7 – 3 mm.

Model: 1854-7372

// U-BLADE

TRIMMER BLADE



Especially developed for extremely close cuts. Ideal for contours, edge lining, sharp outlines and shape ups.
Cutting length: 0.3 mm.

Model: 1584-7320

// T-BLADE

TRIMMER BLADE

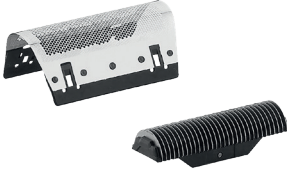


Professional T-Blade. Ideal for close trimming, precise neck and beard outlining and edging around the ears.
Cutting length: 0.3 mm.

Model: 1584-7222

// SUPER CLOSE

Spare parts



Replacement foil and cutter bars
Model: 3616-7000

// MOBILE SHAVER

Spare parts



Replacement foil and cutter bars
Model: 3615-7000

// VANISH™

Spare parts



Replacement foil and cutter bars
Model: 3022905

// DIAMOND-BLADE

TRIMMER BLADE



Innovative carbon coating with diamond-like properties for increased service life, high level of hardness and wear-resistant surface of the top blade. Professional contour blade set with quick-change system.
Cutting length: 0.4 mm.

Model: 1584-7360

// BLADE ICE



Provides instant cooling, lubrication and cleaning for clipper blades and prevents corrosion, contents: 400 ml

Model: 2999-7900

// CLEANING SPRAY



Keeps all blade sets clean, prevents corrosion for a long blade set service life, contents: 250 ml

Model: 4005-7052

// SPECIAL BLADE OIL



For professional care of blade set, contents: 118 ml

Model: 03310-1102

// BLADE CARE SET



Cleaning spray, blade ice, cleaning cloth, blade oil, cleaning brush

Model: 1000-7400



// PROFESSIONAL CLIPPER BLADES

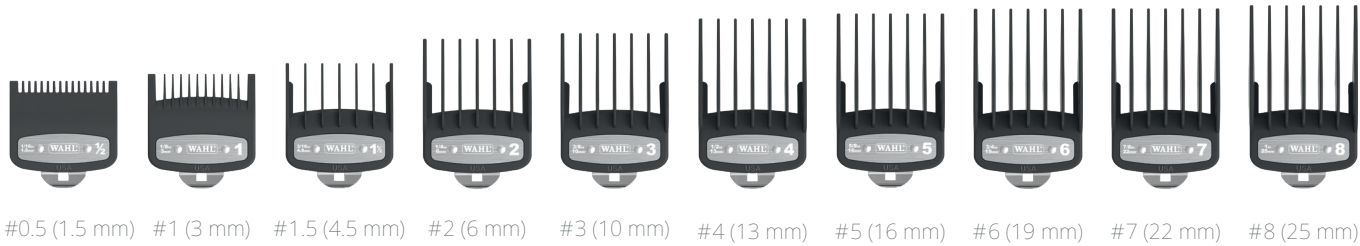
													
MODEL	3026842 F32 FADEOUT™ BLADE	01006-416 TAPER BLADE STANDARD	02191-116 SURGICAL BLADE	02228-416 WEDGE BLADE	02161-416 STAGGETOOTH BLADE	02161-716 GOLD STAGGETOOTH BLADE	02105-416 BALDING BLADE	1887-7170 DIAMOND TAPER LEVER BLADE	1854-7024 DIAMOND BLADE	1854-7372 FINE BLADE	1887-7030 FADING BLADE	1887-7120 BLENDING BLADE	1854-7041 TEXTURIZING BLADE
Quick-detach blades	×	×	×	×	×	×	×	✓	✓	✓	✓	✓	✓
Cutting length	0.5 – 1.2 mm	1 – 2 mm	0.5 – 1.2 mm	0.7 – 1.7 mm	0.5 – 1.2 mm	0.5 – 1.2 mm	0.5 mm	0.8 – 1.8 mm	0.7 – 3 mm	0.7 – 3 mm	0.5 – 2 mm	0.5 – 2 mm	MIN – MID – MAX
Blade set width	46 mm	46 mm	46 mm	46 mm	46 mm	46 mm	46 mm	46 mm	46 mm	46 mm	46 mm	46 mm	46 mm
0-Overlap	✓	×	✓	×	×	×	✓	×	×	×	×	×	×
Fits	VAPOR	SUPER TAPER (CORDLESS, REGULAR, CHROME) TAPER2000 CORDLESS SENIOR (REGULAR, METAL EDITION) MAGIC CLIP			LEGEND (cord / cordless)	CORDLESS MAGIC CLIP (REGULAR / BLACK)		BALDING	KUNO GENIO CHROMSTYLE				
													

// PROFESSIONAL TRIMMER BLADES

												
MODEL	3024059 HI-VIZ™ BLADE	02176-116 A-LIGN™ BLADE	01062-1116 DETAILER BLADE	02215-1116 DETAILER T-WIDE BLADE	02215-716 GOLD DETAILER T-WIDE BLADE	02111-216 BERET BLADE	02111-416 BLACK CHROME BERET BLADE	1584-7320 U-BLADE	1584-7222 T-BLADE	1584-7360 DIAMOND-BLADE	3026859 PEANUT® LI BLADE	
Quick-detach blades	×	×	×	×	×	✓	✓	✓	✓	✓	✓	
Cutting length	0.4 mm	0.4 mm	0.4 mm	0.4 mm	0.4 mm	0.4 mm	0.4 mm	0.3 mm	0.3 mm	0.4 mm	0.4 mm	
Blade set width	40.6 mm	32 mm	35 mm	40.6 mm	40.6 mm	32.5 mm	32.5 mm	32 mm	40 mm	32 mm	32.5 mm	
0-Overlap	✓	✓	✓	✓	✓	×	×	×	×	×	×	
Fits	HI-VIZ	A-LIGN	5-STAR DETAILER CORDLESS DETAILER LI (REGULAR/BLACK)				BERET STEALTH BERET		CHROMINI T-CUT			PEANUT LI
												

// PREMIUM ATTACHMENT COMBS

The ultimate barber attachment combs. Glass and mineral filled plastic seamlessly glides through the hair for smoother cutting experience and more durability. The rounded comb teeth provide more pleasant cutting experience.



Model: 03171-500
#1 – 8 (3, 6, 10, 13, 16, 19, 22, 25 mm)
Fits:
SUPER TAPER | CORDLESS SUPER TAPER | SUPER TAPER CHROME | TAPER2000 | CORDLESS LEGEND | CORDLESS SENIOR | MAGIC CLIP | CORDLESS MAGIC CLIP | LEGEND | BALDING

Model: 03421-100
#0.5 – 8 (1.5, 3, 4.5, 6, 10, 13, 16, 19, 22, 25 mm)

Model: 03354-5001
#0.5 – 1.5 (1.5, 3, 4.5 mm)

// PROFESSIONAL NYLON ATTACHMENT COMBS



Model: 03114-001
#1 (3 mm)

Model: 03124-001
#2 (6 mm)

Model: 03134-001
#3 (10 mm)

Model: 03144-001
#4 (13 mm)

Model: 03135-001
#5 (16 mm)

Model: 03174-001
#6 (19 mm)

Model: 03145-001
#7 (22 mm)

Model: 03150-001
#8 (25 mm)

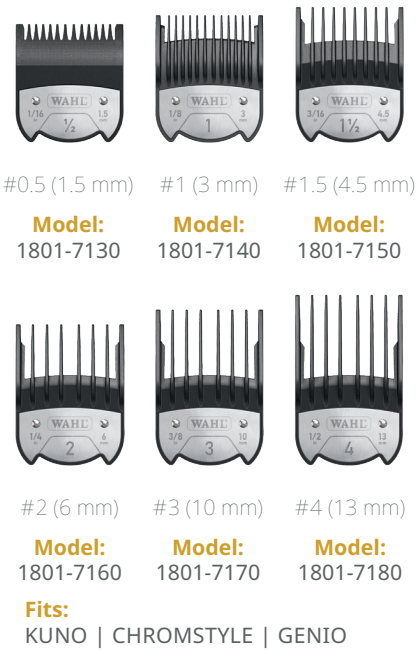
Model: 03070-100
#0.5 (1.5 mm) #1.5 (4.5 mm)

Model: 03170-400
#1 – 8 (3, 6, 10, 13, 16, 19, 22, 25 mm)

Model: 03170-500
#1 – 8 (3, 6, 10, 13, 16, 19, 22, 25 mm)

Fits:
SUPER TAPER | CORDLESS SUPER TAPER | SUPER TAPER CHROME | TAPER2000 | CORDLESS LEGEND | CORDLESS SENIOR | MAGIC CLIP | CORDLESS MAGIC CLIP | LEGEND | BALDING

// MAGNETIC PREMIUM ATTACHMENT COMBS



Model: 1801-7130
#0.5 (1.5 mm)

Model: 1801-7140
#1 (3 mm)

Model: 1801-7150
#1.5 (4.5 mm)

Model: 1801-7160
#2 (6 mm)

Model: 1801-7170
#3 (10 mm)

Model: 1801-7180
#4 (13 mm)

Fits:
KUNO | CHROMSTYLE | GENIO

// STORAGE BOX

Including magnetic premium attachment combs



Model:
1801-7110

Inclusive:
#0.5 – 4 (1.5 – 13 mm)

// STORAGE BOX

without content



Model:
1801-7190

Fits:
MAGNETIC PREMIUM ATTACHMENT COMBS
#0.5 – 4 (1.5 – 13 mm)

// SLIDE-ON ATTACHMENT COMBS



1 PU Model: 1802-7210
#1 (3 mm)

1 PU Model: 1802-7220
#2 (6 mm)

1 PU Model: 1802-7230
#3 (9 mm)

1 PU Model: 1802-7240
#4 (12 mm)

1 PU Model: 1802-7250
#6 (18 mm)

1 PU Model: 1802-7260
#8 (25 mm)

50 PU Model: 1802-7150
#1 (3 mm)

50 PU Model: 1802-7170
#2 (6 mm)

50 PU Model: 1802-7180
#3 (9 mm)

50 PU Model: 1802-7190
#4 (12 mm)

50 PU Model: 1802-7140
#6 (18 mm)

50 PU Model: 1802-7160
#8 (25 mm)

Complete set as 1 PU Model: 1802-7200
#1 – 8 (3 – 25 mm)

Fits:
KUNO | CHROMSTYLE | GENIO

// TRIMMER ATTACHMENT COMBS



Fits:
Chromini

Model: 1501-7000
#1.5 (4.5 mm)



Fits:
DETAILER | HERO

Model: 03059
#1.5 (4.5 mm)



Fits:
Beret | Stealth Beret

Model: 03166
#3 (10 mm)



Fits:
5 STAR DETAILER
CORDLESS DETAILER LI

Model: 08081.7810
#1.5 (4.5 mm)

// ACCESSORIES

										
MODEL	0093-6400 HAIRDRESSING CAPE	4505-7001 HAIRDRESSING CAPE	03206-200 CUTTING COMBS 12 PCS.	03181-700 COMB (BALDING)	03329-017 BLACK SPEED COMB	03329-117 WHITE SPEED COMB	0093-6370 FADE BRUSH	0093-6460 KNUCKLE FADE BRUSH	0093-6490 MINI FADE BRUSH	0093-6090 NECK BRUSH
Description	Embroidered logo, water repellent, material: 60 % polyester 40 % nylon, size 135 x 150 cm	Black with silver print, water repellent, material: 100 % polyester, size 135 x 150 cm	Particularly suitable for clipper cutting in 12 different colors	Sloped comb with fine teeth for precise cuts and clean line direction	barbs hold hair with even tension for less fall out	barbs hold hair with even tension for less fall out	For close fade definition	Easy to hold, cleans out fine hair close to the skin while fading	Cleans out fine hair and is used specifically for contours, details and in the facial area	Neck brush with pleasantly soft synthetic fiber bristle material
EAN	 4 015110 023890	 4 015110 009597	 0 43917 32062 5	 0 043917 318172	 0 043917 332970	 0 043917 332918	 4 015110 021780	 4 015110 028109	 4 015110 028796	 4 015110 017486

										
MODEL	0093-6390 HAIR GRIPS	0093-6080 WATER SPRAY BOTTLE	0093-6360 WATER SPRAY BOTTLE FLAIROSOL	0093-6000 TOWEL, HAIRDRESSER QUALITY BLACK	08081.7820 PRO-SET-TOOL	0093-6135 BARBER BAG	0093-6600 WAHL TOOLBAG LARGE	0093-6450 RETRO BAG	0093-6430 CLIPPER TRAVEL BAG	0093-6410 TOOLMAT
Description	Specially developed to fix hair while cutting	Robust spray bottle made of aluminum	Fine spray, no propellants, continuous spray, 360° upside-down use	Cotton towel 50 x 100cm	Helps to set the T-WIDE BLADE to „Zero Overlap“ - for extremely close contours and clean lines	Spacious bag with plenty of space for all devices, size: 38 x 30 x 28 cm	Spacious leather look bag with multiple interior and exterior compartments and adjustable shoulder strap	Stylish retro leather look shoulder bag with adjustable shoulder strap	Neoprene machine bag for safe transport with zipper	Ideal for all hair clippers and accessories at your working place, size: 45 x 30 cm
EAN	 4 015110 023005	 4 015110 017509	 4 015110 020141	 4 015110 017387	 5 996415 034868	 4 015110 020233	 4 015110 036760	 4 015110 028086	 4 015110 028048	 4 015110 023982

										
MODEL	3026483 VAPOR™	3026434 BLACK CORDLESS MAGIC CLIP®	3000116 CORDLESS SENIOR™ METAL EDITION	3027249 CORDLESS SENIOR™	08594-016 CORDLESS LEGEND™	3027252 CORDLESS MAGIC CLIP®	3026828 LEGEND™	3026830 MAGIC CLIP®	3026826 BALDING™	
Type	Cord / Cordless Clipper	Cord / Cordless Clipper	Cord / Cordless Clipper	Cord / Cordless Clipper	Cord / Cordless Clipper	Cord / Cordless Clipper	Corded Clipper	Corded Clipper	Corded Clipper	
Drive unit	Brushless DC Motor, 8,000 RPM	DC Motor, 6,500 RPM	DC Motor, 7,000 RPM	DC Motor, 7,000 RPM	DC Motor, 6,500 RPM	DC Motor, 5,500 RPM	V9000 Motor, 6,000 RPM	V5000 Motor, 6,000 RPM	V5000 Motor, 6,000 RPM	
Battery operating time	150 min, Li-Ion	100 min, Li-Ion	80 min, Li-Ion	80 min, Li-Ion	100 min, Li-Ion	100 min, Li-Ion	–	–	–	
Battery charging time	60 min	60 min	60 min	60 min	60 min	60 min	–	–	–	
Blade set	F32 FADEOUT™ BLADE, adjustable	GOLD STAGGERTOOTH BLADE, adjustable	SURGICAL BLADE, adjustable	SURGICAL BLADE, adjustable	WEDGE BLADE, adjustable	STAGGERTOOTH BLADE, adjustable	WEDGE BLADE, adjustable	SURGICAL BLADE, adjustable	BALDING BLADE, fixed	
cutting length	0.5 - 1.2 mm	0.5 - 1.2 mm	0.5 - 1.2 mm	0.5 - 1.2 mm	0.7 - 1.7 mm	0.5 - 1.2 mm	0.7 - 1.7 mm	0.5 - 1.2 mm	0.5 mm	
Blade set width	46 mm	46 mm	46 mm	46 mm	46 mm	46 mm	46 mm	46 mm	46 mm	
Cable length	2.4 m	2.4 m	2.4 m	2.4 m	2.4 m	2.4 m	4 m	3 m	3 m	
Weight	280 g	290 g	415 g	365 g	295 g	290 g	620 g	620 g	610 g	
Case pack	6	6	6	6	6	6	6	6	6	
EAN	 0 043917 021751	 0 043917 020877	 0 043917 000909	 0 043917 030135	 0 043917 859460	 0 043917 030142	 0 043917 027234	 0 043917 027258	 0 043917 027210	
Accessories	7 premium attachment combs: #0,5 (1,5 mm), #1 (3 mm), #1.5 (4.5 mm), #2 (6 mm), #3 (10 mm), #4 (13 mm), #5 (16 mm), flat-top hairstyling comb, oil, cleaning brush, blade guard, plug-in transformer	8 premium attachment combs: #0.5 (1.5 mm), #1 (3 mm), #1.5 (4.5 mm), #2 (6 mm), #3 (10 mm), #4 (13 mm), #6 (19 mm), #8 (25 mm), flat-top hairstyling comb, oil, cleaning brush, blade guard, plug-in transformer	3 premium attachment combs: #0.5 (1.5 mm), #1 (3 mm), #1.5 (4.5 mm), flat-top hairstyling comb, cleaning brush, oil, blade guard, plug-in transformer, charge stand	3 premium attachment combs: #0.5 (1.5 mm), #1 (3 mm), #1.5 (4.5 mm), flat-top hairstyling comb, cleaning brush, oil, blade guard, plug-in transformer	8 premium attachment combs: #0.5 (1.5 mm), #1 (3 mm), #1.5 (4.5 mm), #2 (6 mm), #3 (10 mm), #4 (13 mm), #6 (19 mm), #8 (25 mm), flat-top hair-styling comb, oil, cleaning brush, blade guard, plug-in transformer	8 premium attachment combs: #0.5 (1.5 mm), #1 (3 mm), #1.5 (4.5 mm), #2 (6 mm), #3 (10 mm), #4 (13 mm), #6 (19 mm), #8 (25 mm), flat-top hair-styling comb, oil, cleaning brush, blade guard, plug-in transformer	8 premium attachment combs: #0.5 (1.5 mm), #1 (3 mm), #1.5 (4.5 mm), #2 (6 mm), #3 (10 mm), #4 (13 mm), #6 (19 mm), #8 (25 mm), flat-top hair-styling comb, oil, cleaning brush, blade guard, plug-in transformer	8 premium attachment combs: #0.5 (1.5 mm), #1 (3 mm), #1.5 (4.5 mm), #2 (6 mm), #3 (10 mm), #4 (13 mm), #6 (19 mm), #8 (25 mm), flat-top hair-styling comb, oil, cleaning brush, blade guard, plug-in transformer	8 attachment combs: #0.5 (1.5 mm), #1 (3 mm), #1.5 (4.5 mm), #2 (6 mm), #3 (10 mm), #4 (13 mm), #6 (19 mm), #8 (25 mm), flat-top hairstyling comb, oil, cleaning brush, blade guard	2 attachment combs: #0.5 (1.5 mm), #1.5 (4.5 mm), barber comb, preshave brush, cleaning brush, oil, blade guard
										

								
MODEL	3025726 CORDLESS BARBER COMBO™		3023702 HI-VIZ™	08171-016 CORDLESS DETAILER® LI		08172-016 A-LIGN™	08081-1216 DETAILER®	08173-716 VANISH™
Type	Cord / Cordless Clipper	Cord / Cordless Trimmer	Cord / Cordless Trimmer	Cord / Cordless Trimmer		Cord / Cordless Trimmer	Corded Trimmer	Ultimate Finishing-Tool
Drive unit	DC Motor, 6,500 RPM	DC Motor, 6,800 RPM	DC Motor, 7,200 RPM	DC Motor, 6,800 RPM		DC Motor, 7,000 RPM	Rotary Motor, 5,000 RPM	DC Motor 9,000 RPM
Battery operating time	100 min, Li-Ion		135 min, Li-Ion	100 min, Li-Ion		180 min, Li-Ion	–	Up to 100 min, Li-Ion
Battery charging time	60 min		45 min	60 min		60 min	–	50 min
Blade set	GOLD STAGGER- TOOTH BLADE, adjustable	GOLD T-WIDE BLADE, fixed	HI-VIZ™-BLADE, fixed	T-WIDE BLADE, fixed		A-LIGN™ BLADE, fixed	T-WIDE BLADE, fixed	Independent Cutter Bars and Micro-Thin Gold Foil
cutting length	0.5 – 1.2 mm	0.4 mm	0.4 mm	0.4 mm		0.4 mm	0.4 mm	0.05 mm
Blade set width	46 mm	40.6 mm	40.6 mm	40.6 mm		32 mm	40.6 mm	48 mm
Cable length	2.4 m	2.4 m	2.4 m	2.4 m		2.4 m	2.4 m	2.4 m
Weight	290 g	180 g	204 g	186 g		130 g	190 g	175 g
Case pack	6		6	6		6	6	6
EAN	 0 043917 017426		 0 043917 002897	 0 043917 006376		 0 043917 025872	 0 043917 004051	 0 043917 025780
Accessories	3 clipper attachment combs: #0.5 (1.5 mm), #1 (3 mm), #1.5 (4.5 mm) 3 trimmer attachment combs: #0.5 (1.5 mm), #1 (3 mm), #1.5 (4.5 mm), flat-top hairstyling comb, cleaning brush, oil, blade guard, blade adjustment tool, plug-in transformer, etui		charge stand, pre-shave brush, cleaning brush, oil, blade guard, blade adjustment tool, plug-in transformer	3 attachment combs: #0.5 (1.5 mm), #1 (3 mm), #1.5 (4.5 mm), charge stand, barber comb, pre-shave brush, cleaning brush, oil, blade guard, blade adjustment tool, plug-in transformer		3 attachment combs: #0.5 (1.5 mm), #1 (3 mm), #1.5 (4.5 mm), pre-shave brush, cleaning brush, oil, blade guard, blade adjustment tool, plug-in transformer	3 attachment combs: #0.5 (1.5 mm), #1 (3 mm), #1.5 (4.5 mm), blade adjustment tool, cleaning brush, oil, blade guard,	Foil guard, cleaning brush, preshave brush, plug-in transformer
								

// TECHNICAL SPECIFICATIONS

							
MODEL	1887-0470 KUNO	1876-0488 GENIO	1871-0473 CHROMSTYLE	3027253 CORDLESS SUPER TAPER™	08463-316H CHROME SUPER TAPER™	08464-1316H TAPER 2000™	3026832 SUPER TAPER™
Type	Cordless Clipper	Cordless Clipper	Cordless Clipper	Cord / Cordless Clipper	Corded Clipper	Corded Clipper	Corded Clipper
Drive unit	Brushless DC Motor, 7,200 RPM	DC Motor, 5,750 RPM	DC Motor, 5,000 RPM	DC Motor, 5,500 RPM	V5000 Motor, 6,000 RPM	V5000 Motor, 6,000 RPM	V5000 Motor, 6,000 RPM
Battery operating time	100 min, Li-Ion	120 min, Li-Ion	90 min, Li-Ion	100 min, Li-Ion	–	–	–
Battery charging time	60 min	75 min	60 min	60 min	–	–	–
Blade set	DIAMOND TAPER LEVER BLADE, adjustable & detachable	DIAMOND TAPER LEVER BLADE, adjustable & detachable	FINE BLADE, adjustable & detachable	TAPER BLADE STANDARD, adjustable	TAPER BLADE STANDARD, adjustable	TAPER BLADE STANDARD, adjustable	TAPER BLADE STANDARD, adjustable
cutting length	0.8 – 1.8 mm	0.8 – 1.8 mm	0.7 – 3 mm	1 – 2 mm	1 – 2 mm	1 – 2 mm	1 – 2 mm
Blade set width	46 mm	46 mm	46 mm	46 mm	46 mm	46 mm	46 mm
Cable length	–	–	–	2.4 m	3 m	3 m	3 m
Weight	210 g	285 g	290 g	290 g	620 g	620 g	620 g
Case pack	6	6	6	6	6	6	6
EAN	 4 015110 038344	 4 015110 038320	 4 015110 038498	 0 043917 030159	 5 996415 031416	 5 996415 031874	 0 043917 027272
Accessories	6 Premium magnetic cutting guides: 1.5 mm 3 mm 4.5 mm 6 mm 10 mm 13 mm, cleaning brush, oil, charge stand, plug-in transformer 	4 slide-on cutting guides: 3 mm 6 mm 9 mm 12 mm, cleaning brush, oil, charge stand, plug-in transformer 	4 slide-on cutting guides: 3 mm 6 mm 9 mm 12 mm, cleaning brush, oil, charge stand, plug-in transformer 	4 attachment combs: #1 (3 mm), #2 (6 mm), #3 (10 mm), #4 (13 mm), flat-top hairstyling comb, cleaning brush, oil, blade guard, plug-in transformer 	4 attachment combs: #1 (3 mm), #2 (6 mm), #3 (10 mm), #4 (13 mm), flat-top hairstyling comb, cleaning brush, oil, blade guard 	4 attachment combs: #1 (3 mm), #2 (6 mm), #3 (10 mm), #4 (13 mm), flat-top hairstyling comb, cleaning brush, oil, blade guard 	4 attachment combs: #1 (3 mm), #2 (6 mm), #3 (10 mm), #4 (13 mm), flat-top hairstyling comb, cleaning brush, oil, blade guard 

// TECHNICAL SPECIFICATIONS

								
MODEL	3026718 PEANUT® LI	08841-616 BERET™	08841-1516 STEALTH BERET™	1591-0465 T-CUT	1591-0466 CHROMINI	3214-0471 MICRO GROOMSMAN	3616-0470 SUPER CLOSE	3615-0471 MOBILE SHAVER
Type	Cordless Trimmer	Cord / Cordless Trimmer	Cord / Cordless Trimmer	Cordless Trimmer	Cordless Trimmer	Nose and Ear Trimmer	Finishing Tool	Cordless Shaver
Drive unit	DC Motor, 7,000 RPM	DC Motor, 6,000 RPM	DC Motor, 6,000 RPM	DC Motor, 7,000 RPM	DC Motor, 7,000 RPM	Battery operated (1 x AAA)	DC Motor, 7,500 RPM	DC Motor
Battery operating time	110 min, Li-Ion	75 min, Li-Ion	75 min, Li-Ion	75 min	85 min	–	150 min, Li-Ion	45 min
Battery charging time	20 min	60 min	60 min	120 min	120 min	–	90 min	480 min
Blade set	PEANUT®LI BLADE, detachable	BERET BLADE, detachable	BLACK CHROME BERET BLADE, detachable	T – BLADE, detachable	U – BLADE, detachable	–	Round ground and polished cutter	Round ground and polished cutter
Cutting length	0.4 mm	0.4 mm	0.4 mm	0.3 mm	0.3 mm	–	0.05 mm	0.2 mm
Blade set width	32.5 mm	32.5 mm	32.5 mm	40 mm	32 mm	–	45 mm	40 mm
Cable length	1 m	2.3 m	2.3 m	-	-	–	1.8 m	2.4 m
Weight	113 g	115 g	115 g	135 g	130 g	35 g	120 g	90 g
Case pack	6	6	6	6	6	12	20	48
EAN	 0 043917 026602	 4 015110 010074	 4 015110 014973	 4 015110 038535	 4 015110 038511	 4 015110 010159	 4 015110 028567	 4 015110 008101
Accessories	4 attachment combs: #1 (3 mm), #2 (6 mm), #3 (10 mm), #4 (13 mm), red blade guard, USB-C power cord, 4 guards, blade oil, cleaning brush	4 attachment combs: #1 (3 mm), #2 (6 mm), #3 (10 mm), #4 (13 mm), charge stand, cleaning brush, oil, blade guard, plug-in transformer	4 attachment combs: #1 (3 mm), #2 (6 mm), #3 (10 mm), #4 (13 mm), charge stand, cleaning brush, oil, blade guard, plug-in transformer	cleaning brush, oil, charge stand, plug-in transformer	4 premium cutting guides: 1.5 mm 3 mm 4.5 mm 6 mm, cleaning brush, oil, charge stand, plug-in transformer	Battery, classy box and protective cap	Spare shaver cutter, shaving foil, cleaning brush, travel pouch, metal box, plug-in transformer	Spare shaver cutter, shaving foil, cleaning brush, travel pouch, metal box, plug-in transformer
								



// TECHNICAL SPECIFICATIONS

							
MODEL	4321-0470 VANQUISH™	4321-0471 VANQUISH™ Rose Gold	4317-0470 BARBER DRYER	4314-0475 TURBO BOOSTER 3400 ERGOLIGHT™	4352-0470 VENTUS PRO	4340-0470 SUPERDRY™	4360-0470 PROTECT
Type	Professional Hair Dryer	Professional Hair Dryer	Professional Hair Dryer	Professional Hair Dryer	Professional Hair Dryer	Professional Hair Dryer	Professional Hair Dryer
Drive unit	BLDC Motor, 101,000 RPM (brushless direct current)	BLDC Motor, 101,000 RPM (brushless direct current)	AC Motor	AC Motor	AC Motor	AC Motor	AC Motor
Output	1,600 W	1,600 W	2,200 W	2,400 W	2,200 W	2,000 W	1,500 W
Air flow	~ 93 m³/h	~ 93 m³/h	97 m³/h	110 m³/h	103 m³/h	108 m³/h	~ 84 m³/h
Type of operation	4 heat settings incl. cold shot / 3 speed settings & Memory function	4 heat settings incl. cold shot / 3 speed settings & Memory function	2 speeds, 3 heat levels, cold shot button	2 speeds, 3 heat levels, cold shot button	2 speeds, 3 heat levels, cold shot button	2 speeds, 3 heat levels, cold shot button	2 speeds, 3 heat levels, cold shot button
Cable length	3 m	3 m	2.7 m with hanging loop	2.8 m with hanging loop	3 m with hanging loop	3 m with hanging loop	2.8 m with hanging loop
Weight	340 g	340 g	652 g	530 g	515 g	630 g	570 g
Case pack	6	6	6	12	6	12	12
EAN	 4 015110 038979	 4 015110 039952	 4 015110 035527	 4 015110 026549	 4 015110 038818	 4 015110 009207	 4 015110 038887
Accessories	2 professional magnetic styling nozzles + 1 diffuser 	2 professional magnetic styling nozzles + 1 diffuser 	2 professional click nozzles 	2 professional nozzles (long hair/standard) 	2 "click & turn" professional nozzles (long hair/standard) 	2 professional nozzles 	2 professional nozzles (long hair/standard) 



			
MODEL	4300-7910 UNIVERSAL-DIFFUSOR	4352-7020 PRO DIFFUSOR	4360-7000 DIFFUSOR
Compatibility	Fits: All hair dryer	Fits: Turbobooster 3400 Ergolight, Ventus Pro	Fits: Super Dry, Protect

// TECHNICAL SPECIFICATIONS





MODEL	4466-0470 CERALINE	4417-0472 CUTEK
Type	Professional Premium Hair Straightener	Professional Ceramic Hair Straightener
Heating plates	Width: 25 mm, length: 100 mm ceramic-tourmaline-coated	Width: 24 mm, length: 90 mm ceramic-coated
Heat-up time	25 sec.	30 sec.
Operating temperature	150–230 °C in 5 steps by touch display	150–230 °C
Sleep mode	Safety cut-off after 60 min.	Safety cut-off after 60 min.
Cable length	2.7 m with hanging loop	2.8 m with hanging loop
Weight	~ 210 g	~ 210 g
Case pack	12	12
EAN		
Accessories	-	-



MODEL	4550-0471 AIRSTYLER PRO
Type	Professional Premium Airstyler-Set
Type of operation	2 speed & heat levels, cooling level
Output	2,400 W
Safety	Safety thermostat / overheat protection
Cable length	2.8 m with hanging loop
Weight	~ 270 g
Case pack	6
EAN	
Accessories	3 thermal circular brushes Ø 25, 30, 38 mm 30 mm with retractable bristles 



MODEL	4437-0471 CURL PRO
Type	Conical Curling Tong with Titanium Coating
Barrel tapers	Ø 25 mm down to Ø 13 mm
Heat-up time	30 sec.
Operating temperature	80–210 °C
Sleep mode	Safety cut-off after 60 min.
Cable length	2.5 m swivel cord
Weight	~ 150 g
Case pack	12
EAN	
Accessories	Including 1 heat protection styling glove 



5-STAR  SERIES

VAPOR

READY FOR TAKE-OFF





Follow us  

Wahl GmbH | Villinger Straße 4 | 78112 St. Georgen
Tel. +49(0)7725 4940-0 | Fax +49(0)7725 4940-145

www.wahl.com

We assume no liability for any printing errors or mistakes.
Subject to change without notice. All rights reserved.